

Installation Guide

Galvanic Isolator Gi120/S/XPT

The Gi120/S/XPT is designed for installations connected to shore supplies protected by an RCD with a trip current not exceeding 30mA.



The Gi120/S/XPT Galvanic Isolator is intended to prevent Galvanic and stray currents from finding a circulating path through the earth connection of a shore supply. It does this by breaking the earth connection from the perspective of Galvanic/Stray currents, while ensuring an uninterrupted path to earth for fault currents. Thus the integrity of the safety electrical earth is maintained.

Ensure that no ground connections on the vessel bypass the Galvanic isolator.

In the box you should have:

- This guide
- 1 x Galvanic Isolator

Please read through these instructions. If you are not confident that you can fit this item yourself, please consult a qualified electrician or call us to exchange the unit for our plug in isolator of similar rating, which is “plug & play”, requiring no installation.

Siting the unit:

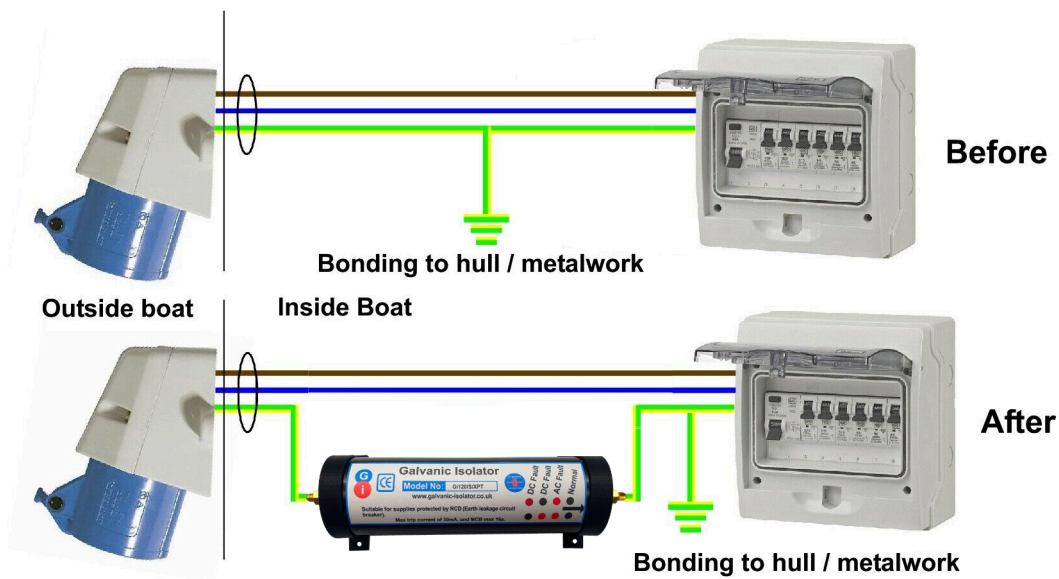
The main unit is designed for internal use, and may be placed anywhere where it will not be subject to excessive heat or physical damage. In most cases it will be located near to the point where the mains supply enters the vessel.

To comply with CE standards, the earth connection of your boat must be bonded electrically to the hull. This is a requirement of the Recreational Craft Directive, and essential for the electrical safety of the boat. This bonding must not be broken.

Please see following pages for simple installation instructions.

Installation Instructions

1) Disconnect the boat from the shore supply, and ensure that any invertors/generators etc are switched off. Please refer to the “before & after” diagram below.



2) Disassemble the power input connection attached to the boat, and locate the EARTH terminal. This will normally have a green or green/yellow cable connected to it. It is the LONGEST pin in the connector.

3) Disconnect that cable, and route it inside the boat to the place where the isolator will be located.

(If there are several wires in the terminal, they must ALL be routed to the same place and connected to the same terminal of the isolator. This is CRUCIAL to ensure that the earth bonding is retained, and that your isolator works as intended). Label the cable(s) so that they can be identified later.

4) Connect a new cable from the earth terminal of the power input connection, and route it inside the boat to the place where the isolator will be located. This cable should have a minimum cross-sectional area 2.5mm^2 .

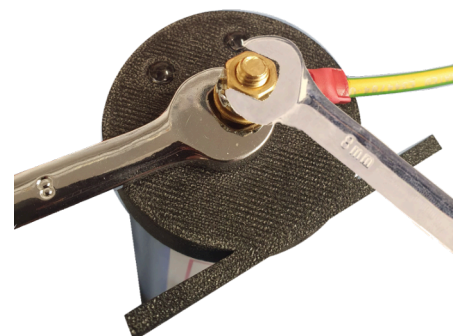
Label the cable so it can be identified later.

5) Having fixed the isolator, connect the single cable to one of the terminals on the isolator (either terminal can be used).

6) Connect the remaining cable(s) to the other terminal of the isolator. Do not tighten yet.

7) Reassemble the power input connection, ensuring that all screws are tight.

8) Tighten the connections to the isolator, taking care not to over-tighten. **Use a spanner to hold the lower nut whilst tightening the upper nut** (See Picture).



9) If any of the lights illuminate, earth leakage is present. **It is NOT a sign of a faulty isolator!** Please follow the link below and refer to the fault finding information.

Your Gi120/S/XPT has been designed to give many years of service. In the event of a major electrical fault, lightning strike etc, we recommend that your isolator is checked to confirm correct operation. We offer a free checking facility. If you wish to take advantage of the service, please email or phone us for a returns number.

**For Operating Instructions & Fault Finding guide, please visit:
www.galvanic-isolator.co.uk**

Click the *Instructions* link, and select your model Gi120/S/XP

The LED's on your isolator inform you about any faults with your boats earthing system.

Illuminated LED's NEVER indicate a faulty isolator.



BOTH LED's should normally be OFF. The lights ONLY come On in the event of a problem.

Illuminated lights NEVER Indicate a faulty isolator.



Both Lights OFF: Normal operation. No action required – just check back occasionally to ensure that all's well.



One Light ON: If either of the lights are on, it indicates DC leakage. This can cause severe corrosion to your boat. Our instructions give clear basic advice on how to resolve the problem.



Both Lights ON: If both lights are ON, this indicates AC leakage, usually from the mains wiring or a connected appliance. AC leakage can be a danger to life. Please see instructions for help in rectifying the problem.



Galvanic Isolator

Gi120/S/XPT

Instruction Leaflet



Note:

The isolator is suitable for shore supplies that are protected by an RCD (Earth Leakage Circuit Breaker) with a trip current not exceeding 30mA. If in doubt, please consult a qualified electrician, or call us. We will be glad to help.

We offer a FREE isolator checking service. Although rare, the performance of your isolator could be impaired by a major electrical fault, lightning strike etc. Should you wish us to check your isolator, please telephone us for a returns number. Isolators are checked free of charge, (subject to charge for P & P).



Tel: 0757 807 3490

www.galvanic-isolator.co.uk



Galvanic Isolator

Gi120/S/XPT

Galvanic isolators protect the hull of a boat from corrosion caused by Galvanic and leakage currents that arise due to chemical interactions between your boat and nearby boats/structures and bank- side.

The LED's on your isolator inform you about any faults with your boats earthing system.

Illuminated LED's NEVER indicate a faulty isolator.



BOTH LED's should normally be OFF. The lights **ONLY** come On in the event of a problem.

Illuminated lights NEVER Indicate a faulty isolator.



Both Lights OFF: Normal operation. No action required – just check back occasionally to ensure that all's well.



One Light ON: If either of the lights are on, it indicates DC leakage. This can cause severe corrosion to your boat. Our instructions give clear basic advice on how to resolve the problem.



Both Lights ON: If both lights are ON, this indicates AC leakage, usually from the mains wiring or a connected appliance. AC leakage can be a danger to life. Please see instructions for help in rectifying the problem.

Occasionally, when you fit a Status Monitored galvanic isolator, one or both of the warning lights may glow straight away.

If both lights are illuminated on your galvanic isolator, you have AC earth leakage. **You do NOT have a faulty isolator.** In fact, your isolator is alerting you to a potentially dangerous situation that you may not previously have been aware of.

There are two main types of earth leakage: Mains Leakage and Imprinted Leakage.

Mains Leakage

Mains Leakage happens when an appliance, cable or connection has poor insulation resistance, and some of the circuit's current "leaks" away to earth. If there is sufficient leakage, the earth leakage circuit breaker, also known as the RCD, will trip, disconnecting the supply.

At lower levels of leakage, the RCD may not trip, but the lights on your galvanic isolator may still glow, alerting you to the likelihood of earth leakage. Usually, an earth leakage fault will only get worse, so you should always take this seriously and investigate.



Ensure that the electrical supply is disconnected before working on a circuit, and remember that in some systems, an auxiliary supply such as an inverter may automatically kick in when the mains supply is disconnected. If you are in any doubt, you should entrust the work to a competent person.

No two electrical systems are the same, so it's only possible to give the broadest suggestions of how to locate any problem. Usually some detective work is required, and this starts by switching off the main RCD on the boat. In most cases, this will result in the lights going out. If not, there is probably something connected to the mains supply BEFORE the RCD.

Assuming the lights go out when the RCD is switched off, switch off ALL the circuit breakers, then switch the RCD back on. In most cases, the isolator's lights will stay off. You can then switch the circuit breakers back on one at a time until the isolator's lights come back on. The last circuit breaker you switched on has the faulty circuit, or appliance connected to it.

Very rarely, even though all the circuit breakers (except the RCD) are switched off, the isolator lights will remain on. In this case you will need to disconnect all appliances, either by pulling out the plugs, or disconnecting any wired in appliances. Do this one at a time, taking care to ensure that you don't forget anything. As you disconnect items, check the isolator lights. The last item you disconnect is the one causing problems.

When you have traced the fault to a single appliance or circuit, it must then be checked for earth leakage by a competent person.

Imprinted Leakage

Imprinted Leakage typically occurs when equipment using a Switched Mode Power Supply Unit, (SMPSU), is connected to your system.



Pay close attention to earthing of equipment. Equipment is often installed without adequate earth bonding. Please consult the equipment's installation manual, or contact the manufacturers for more information.



Earth bonding point

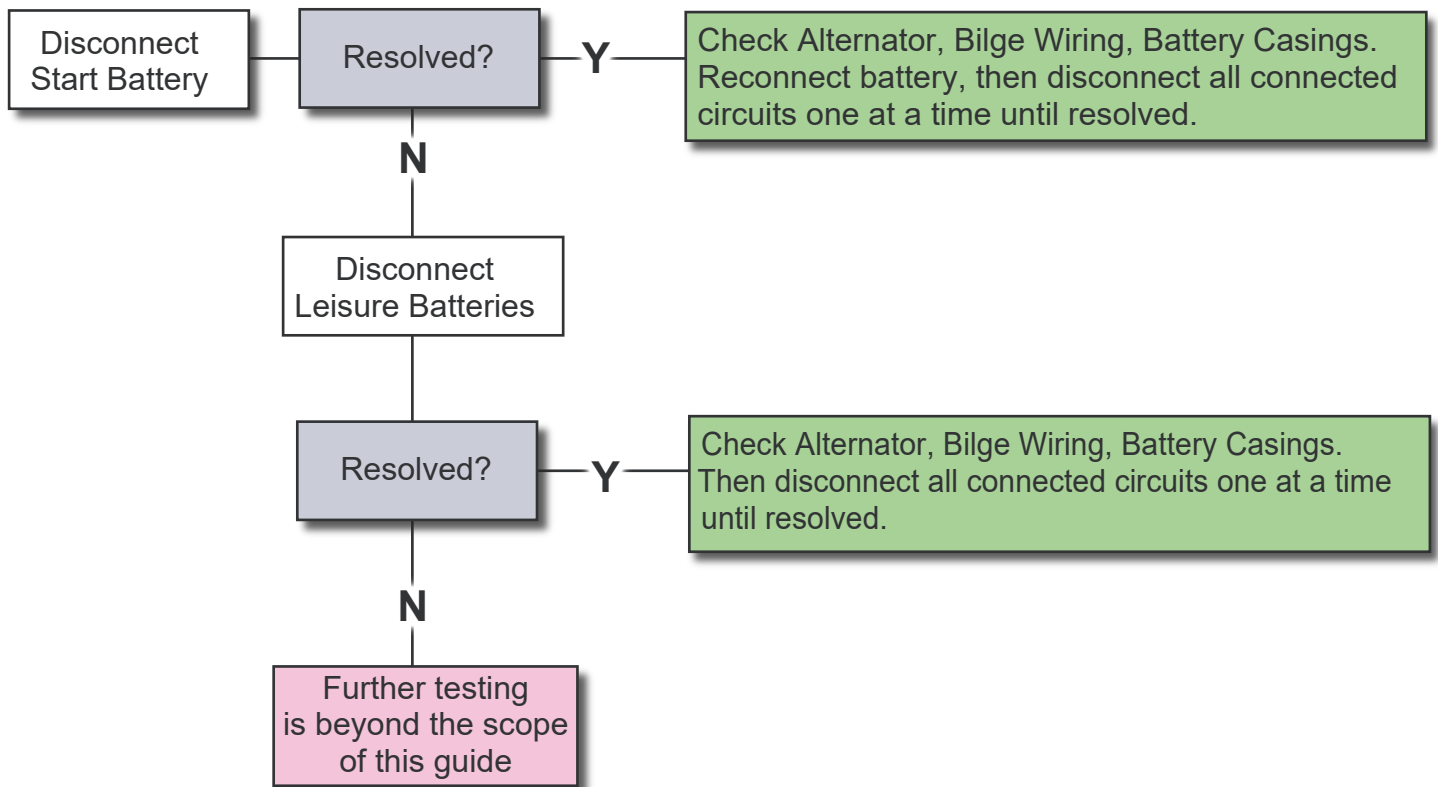
Equipment utilising SMPSU's include, Battery Chargers, Computers, TV's, Domestic Appliances, Phone Chargers etc.

In our experience, battery chargers are often the cause of imprinted leakage. CE regulations require that equipment should not create this kind of interference, but not all equipment is as "clean" as it should be.

Because of the way SMPSU's operate, some of them leak power into the boat's earth wiring. This can cause the galvanic isolators light to come on, as the isolator correctly detects the leakage.

Imprinted Leakage is traced in exactly the same way as for Mains Leakage. However, when you track the problem down to an individual appliance, it may still pass an Earth Leakage test. In that case, it's likely that the problem is Imprinted Leakage. Imprinted Leakage is often due to incorrect installation, but can also result from design or manufacturing issues.

ONE (either) LED glowing



BOTH LEDs glowing



This indicates a possibility of AC (mains voltage) leakage. Proceed with great care. Danger of electrical shock. If in doubt, please consult a qualified electrician.

